

Adopted from part of the aerial photograph, Photo No. E038594C, Flying Height 6,900 ft. (Date of Flight: 23 March 2018) from Survey and Mapping Office, Lands Department, The Government of the Hong Kong Special Administrative Region.  
 摘錄自香港特別行政區政府地政總署測繪處之鳥瞰照片，照片編號E038594C，飛行高度6,900呎(飛行日期：2018年3月23日)。



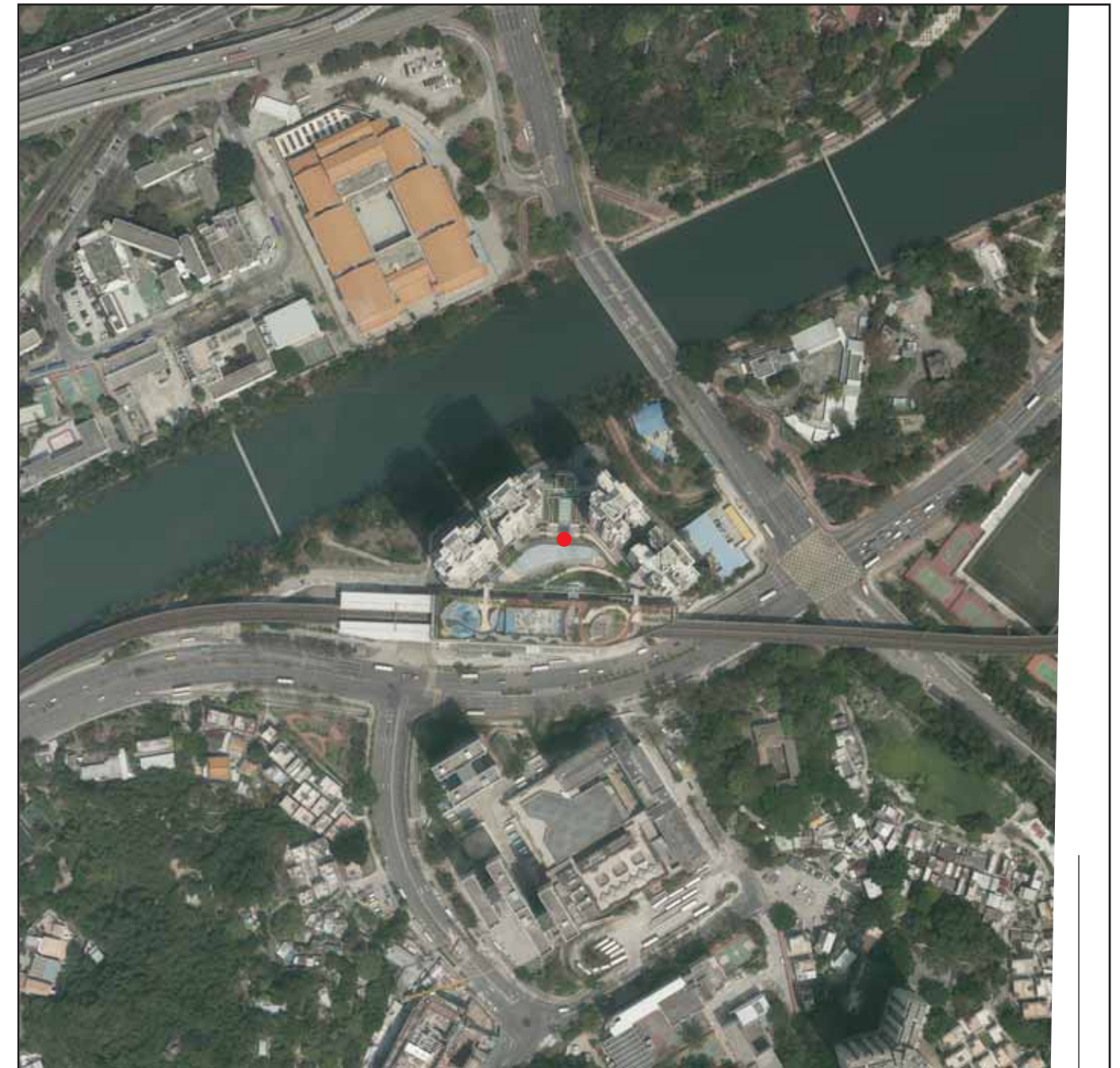
This blank area falls outside the coverage of the aerial photograph  
 鳥瞰照片並不覆蓋本空白範圍

Survey and Mapping Office, Lands Department, The Government of HKSAR © Copyright reserved – reproduction by permission only  
 香港特別行政區地政總署測繪處©版權所有，未經許可，不得複製。

Notes:

1. The aerial photographs may show more than the area required under the Residential Properties (First-hand Sales) Ordinance due to the technical reason that the boundary of the development is irregular.
2. The aerial photographs are available for free inspection during normal office hours at the sales office.

Adopted from part of the aerial photograph, Photo No. E038595C, Flying Height 6,900 ft. (Date of Flight: 23 March 2018) from Survey and Mapping Office, Lands Department, The Government of the Hong Kong Special Administrative Region.  
 摘錄自香港特別行政區政府地政總署測繪處之鳥瞰照片，照片編號E038595C，飛行高度6,900呎(飛行日期：2018年3月23日)。



● Location of the development  
 發展項目的位置

This blank area falls outside the coverage of the aerial photograph  
 鳥瞰照片並不覆蓋本空白範圍

附註：

1. 由於發展項目的邊界不規則的技術原因，上圖可能顯示多於《一手住宅物業銷售條例》所要求顯示的範圍。
2. 該鳥瞰照片現存於售樓處，於正常辦公時間內供免費查閱。